



Wombourne  
High School



# Prospectus

2026/2027

---

**INVICTUS**

---

Education Trust

---

# Welcome to *Our School*



Welcome to Wombourne High School. We are an ambitious and supportive school, committed to providing all our students with the best possible education. We believe that everyone has potential: our commitment is to help each young person to make the most of their abilities and to achieve their goals. We believe in high academic aspirations for every student, and we achieve these aspirations through our core values of hard work, positivity and kindness.

At Wombourne High School our students work hard. They are courageous and determined in the pursuit of their goals, and resilient to setbacks. We help our students to understand that effort now will help ensure their success in the future. Our students know that every step they take forms part of their journey to success, and we help them to understand that long term goals are achieved by taking small steps every day.

Through our positive environment, we always promote the highest possible aspirations for our students. At Wombourne High School we believe that anything is possible and are committed to providing opportunities and experiences that

lead to happy, healthy, and successful futures. Our students are challenged to do their best and in return we insist on high standards of effort and behaviour. Finally, and most importantly, we expect all our students and our staff to show kindness: to treat others as they wish to be treated, to be respectful, fair, and compassionate. We are privileged to help our students develop their sense of responsibility and respect for themselves and the world around them, and celebrate diversity through our inclusive culture.

At Wombourne High School we recognise the importance of good examination results for our students' future success, but we know that these alone are not enough. To secure places at the very best universities and on the most prestigious apprenticeships, our students also need to develop their wider skills and attributes so they can take their place as positive and independent members of society, ready for success in whichever field they choose. Learning at Wombourne reaches far beyond the classroom; we offer an enriched, enjoyable curriculum and encourage all students to get involved in the wider life of the school, offering extra-curricular activities in a wide range of areas such as sport and the arts and an extensive variety of educational visits and opportunities.

Our facilities at Wombourne High School are continuing to be updated to ensure our students learn in the best possible environment. A new 10 classroom Maths and History teaching block opened in September 2020, we recently unveiled our new state of the art all-weather floodlit sports pitch which is a fantastic addition to our extensive sports facilities, a new multi-million pound practical block was completed in the summer of 2025, and opened this September.

Choosing the right secondary school is one of the most important decisions that you will make for your child and I hope that you will visit us to see the exceptional opportunities we offer.

**Mr Nicholas Bradnick-Thompson,**  
HEADTEACHER

## Attainment & Achievement 2025

We are delighted to be able to celebrate the amazing results that the students of Wombourne High School have achieved. Our students have once again exceeded expectations and achieved outstanding GCSE results that build upon the successes of previous years. We are so pleased that all of the efforts and hard work put in by students have been recognised and our students should be proud of their achievements, just like we are.

Our students displayed our school values of hard work, positivity and kindness throughout the exam season, and we are incredibly proud of their achievements and the commitment and tireless dedication of our staff. The majority of the Class of 2025 will continue with further studies, either at Wombourne Sixth or other local Sixth Forms or Colleges, and we wish all our students the very best of luck in whatever pathway they choose.

# Joining our School

# INVICTUS

Education Trust

We recognise that the move to secondary school can be both exciting and daunting and we have an established and successful transition programme run by a dedicated and experienced team of staff to ensure that every child receives the support that they need during this process.

Each child is visited in their primary school during the summer term and staff will talk to them and their teachers about the move. This enables us to gather academic and social information to help us plan our provision and gives the students the opportunity to talk to us about any questions they have. All students will then visit Wombourne for two transition days which gives them the chance to find out what secondary school involves and to meet staff and other children who will be joining us in Year 7.

We also run a transition summer school during the first week of the summer holidays for all incoming Year 7 students.

We hold a new parents' meeting during the summer term to give parents a further insight into what life at Wombourne is like and how they can support their child's success.

Through our work with primary partners we are able to identify students who are vulnerable or have Special Educational Needs who may need extra support during the transition process. We have a range of additional programmes which enable these students to spend more time in school before they transfer

## High Expectations

We are very proud of our students and the positive attitudes that they show. We have high expectations in terms of standards of achievement, behaviour, attendance, appearance and attitude and have a strong pastoral system to support students in meeting the standards set out in our Code of Conduct.

## Supporting Progress

We appreciate that any student may face barriers to their learning at some time during their school career and our Student Support Team, through their regular reviews of student progress and communications with parents, will identify students who are struggling.

We have a range of effective programmes and our dedicated and talented team of student support staff will work closely with children and their parents to address any difficulties that may arise. Support services include; Heads of Year and Pastoral Support

Officers, who support with improving self-esteem, organisation and revision, an Attendance Officer who assists students with health-related issues and Pastoral Support Officers and Inclusion Assistants who provide support with other issues that may arise during the course of a student's time at the school. The aim of all of these programmes is to ensure that students receive the support needed to enable them to continue their learning and make good progress.

## Admissions

Wombourne High School is based in Wombourne in South Staffordshire but welcomes applications from students outside of its catchment area, particularly those living in Dudley and Wolverhampton. Transport is available from these areas.

Admissions for September 2026 are handled by Staffordshire School Admissions Service and details of how to apply for a place can be found on their website:

[www.staffordshire.gov.uk/admissions](http://www.staffordshire.gov.uk/admissions)

Parents who wish to enquire about a place at other times during the year should contact the school directly.



# Wombourne *Curriculum*

The curriculum here at Wombourne High School provides a broad and balanced learning experience that inspires pupils to learn and achieve. Our aim is that students enjoy learning. We believe in trips, visits and speakers to make the curriculum come alive, we enable students to develop a passion for the subjects that really interests them, facilitating future study and employment.

We value the key subject disciplines that have always been found in good schools including the core subjects of English, Maths and Science, as well as; the main Humanities subjects, Modern Foreign Languages, Physical Education, Technology and a range of creative subjects such as Art, Drama and Music. We also offer specialist subjects such as Business Studies and Computing, alongside vocational provision: Digital Media, Business and Health & Social Care. Pupils' spiritual, moral, social and cultural development and, within this,

the promotion of British values, are important aspects of the school's work and are addressed through the curriculum and wider experiences that students have in school. We also provide opportunities for students to learn the importance of developing a strong work ethic, good behaviour, taking responsibility, resilience, physical, mental and personal well-being and keeping themselves safe. Our aim here at Wombourne is to create confident, well rounded young people who are ready to take their place and be successful in society.

This means that we seek not only to provide a broad and balanced range of subject disciplines, alongside key cross curricular skills, but will also develop the qualities necessary for our students to be confident and employable young people who are able to adapt to the ever changing demands of the world in which they live.



## Years 7 to 9

The specialist facilities and encouraging knowledgeable teachers that provide the foundation for the Key Stage 3 curriculum ensure students are inspired to engage with their learning.

Years 7, 8 and 9 provide a challenging and enriching learning experience that builds upon each child's primary school experiences and develops strengths, aptitudes and interests. Our curriculum has a clear focus on the core subjects of English, Maths and Science and we also offer; Art; Computing/ ICT; Design Technology; Engineering; Drama; Geography; History; Modern Foreign Languages; Music, Physical Education, Dance and Religious Education. This broad and balanced provision is, we believe, a perfect curriculum to prepare our students for examination success and helps them to develop a thirst for knowledge and love of learning. Throughout Years 7 to 9 student progress is tracked to ensure that all students have the opportunity to fulfil their potential. This includes those who require stretch and challenge and those who need additional intervention, particularly in literacy and numeracy, to catch up with their peers.

In Year 9 students have the opportunity to engage in a choice led curriculum, regarding their creative choices. They can begin to engage in a bespoke pathway that allows them to experience a greater focus on performing or technological subjects at Key Stage 3.

## Years 10 & 11

In Years 10 and 11 all students study Mathematics, English Language, English Literature and Trilogy Science, students will sit GCSE exams in these subjects at the end of Year 11. Many students choose to study French or Spanish GCSE.

Years 10 and 11 offer students a further degree of flexibility in their choice of subjects and in addition to the subjects offered in Years 7 to 9, the options pool also includes; Business Studies, Food and Nutrition, Product Design, Health and Social Care and Digital Media. The majority of courses studied by students lead to GCSE qualifications but we also offer BTEC and Technical qualifications in Business, Sport, Health and Social Care and Digital Media.

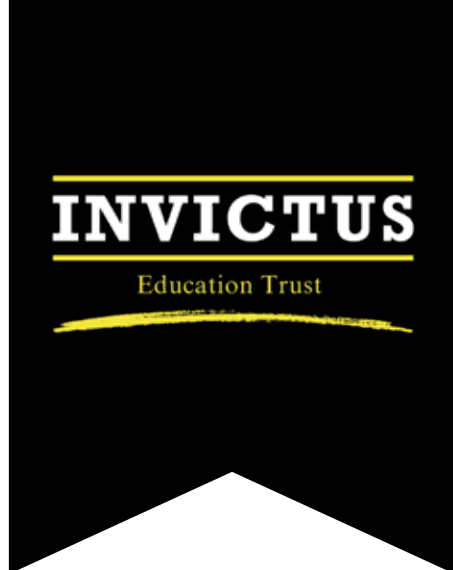
## Enhanced Curriculum

At Wombourne, we build our Enhanced Curriculum into our school day. Students have an element of autonomy of choice to engage in a wide range of opportunities to develop their wider skills, or to deepen their understanding and learning in the broadest sense.

### Next Steps

Preparing students to take the next step is an important part of our provision and this includes information and guidance about subject choices for Year 9, the options available to students at the end of Year 11 and support with Higher Education, Level 1-4 Apprenticeships and careers. Expertise is available within school through our careers specialist, externally through our independent careers advice programme and online. This helps to raise aspirations and student awareness of what courses and careers are available.





*Invictus Education Trust was created in March 2015 by a group of like-minded schools: Crestwood, Ellowes Hall Sports College, Kinver High and Wombourne High School. Two schools have since joined us, Leasowes High School in Autumn 2016 and Pedmore High School in September 2018. Rufford Primary School became the first primary school to join us in September 2021 further strengthening an already thriving Trust.*

Invictus Education Trust is proud to be a leading educational institution that is dedicated to providing our pupils with an exceptional education, unique opportunities and elite experiences. With a focus on academic excellence, holistic development and a passion for unlocking our students' limitless potential, we stand at the forefront of educational innovation.

Through our commitment to personalised learning, a wide array of enriching experiences, Invictus Education Trust offers a transformative educational journey that puts our pupils at the heart of everything we do. The list is endless.

Academically, our teachers are supported by a team of subject directors who have proved themselves to be at the forefront of their professions with a history of improving student outcomes. Our Headteachers, and their teams, focus relentlessly on teaching and learning, ensuring students are challenged to achieve their very best. Our pastoral teams work hard to ensure young people are cared for, focusing on their emotional and physical welfare, allowing them to integrate fully in school life.

We believe that everyone involved in our schools should be well supported in an inclusive, supportive environment. Personal development is a strength in all our schools.

We do our utmost to prepare our young people for life outside and beyond school. There are many different leadership opportunities across our schools. These include Head Students, Prefects, subject Ambassadors and Librarians. The range of enrichment activities across the Trust is varied.

#### ENCOURAGING

We offer extra curricular opportunities which reflect pupils' interests whilst encouraging them to try activities that they may not have experienced or even thought they could do at school.

# WE ARE

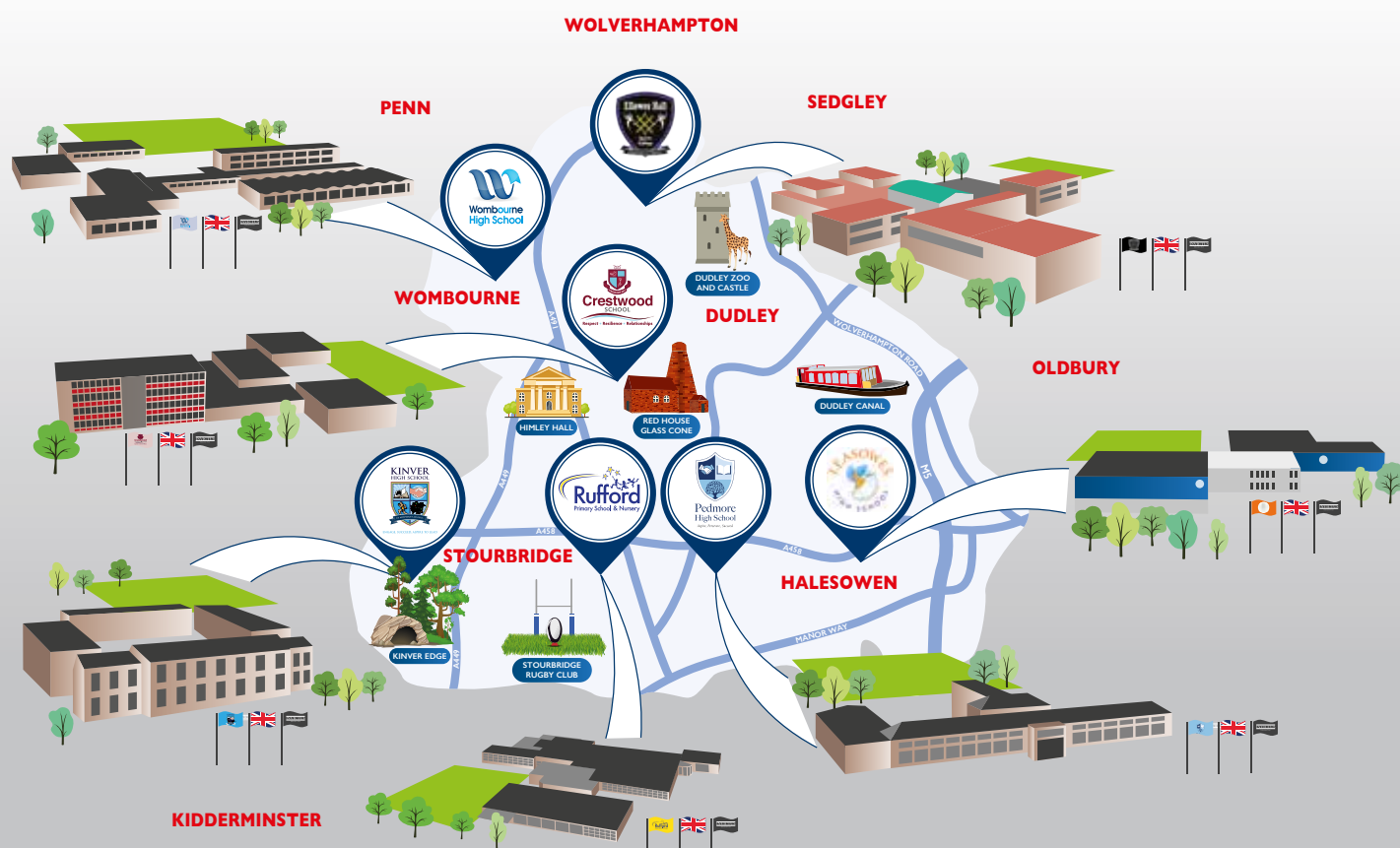
**OFSTED**

**GOOD**

**Ofsted Good Provider**

**Ofsted Good Provider**

# OUR SCHOOLS



Our Invictus values always place our students at the heart of everything we do

## Every great story begins here!

Outstanding inclusion,  
care and well-being  
where all can thrive  
and flourish

### MISSION

'Excellence everyday,  
unlimited ambition and  
transforming lives'

Excellent teaching and  
learning where we have  
knowledge-rich staff  
within their area of  
expertise

### VISION

'To create a community of inclusive  
schools where people choose  
to learn with us, work with  
us and belong with us,  
so that everyone  
succeeds.

Ambitious careers and  
enrichment provision  
give meaning and  
purpose to education

### VALUES

Respect  
Resilience  
Relationships

Our schools sit at  
the heart of our  
communities

# Sport *at Wombourne*

With a state of the art 3G Pitch, combined with a swimming pool, sports hall, gymnasium and other specialist sports facilities, allows students to excel in sport. There is an extensive and engaging range of sports available through lessons and extracurricular clubs. All students are encouraged to get involved as part of our commitment to promoting positive health and well-being, and our highly qualified PE staff use our excellent facilities to cater for all levels of experience.

Students who wish to inspire and motivate others to participate have the chance to train as Sports Leaders and work with staff in school and local primary schools to support with sporting events. We are proud of the school's sporting reputation and students have enjoyed team and individual success in school, county, regional and national competitions.



# Performing Arts *Excellence*

## INVICTUS

Education Trust

The school's production of Oliver in 2025 was a roaring success, the audience thought they were in the West End and the experience for all students taking part was transformational. School shows, musical competitions, participation in the Shakespeare Schools Festival are central to the life of the school. Visits to theatres are frequently organised and students also have access to the production and technical side of the subject through

our theatre standard facilities. Music is an important part of school life and talented musicians have a wealth of opportunities to perform. Students who wish to learn or continue to play a musical instrument can have lessons from one of our instrumental team. The school has an excellent reputation for Art and the annual Art Exhibition has been very well received. Students have the opportunity to visit galleries and exhibitions as well

as going out into the community to seek inspiration and ideas for their own work. Opportunities within the Arts are being further developed through the Trust. In addition to having the chance to perform and attend workshops in other schools, high quality experiences are also available.



# Unique Opportunities & *Elite Experiences*

## Trips and Visits

Trips and visits are an important part of school life and help to broaden student experiences of education beyond the classroom. Various trips are organised throughout the year such as study visits (in the UK and abroad), cultural visits (including Rome, Italy, Washington, Paris, Boulogne, Berlin), foreign exchanges, residential and reward trips.

## Duke of Edinburgh Award Scheme

Wombourne has been running the Duke of Edinburgh Award Scheme very successfully over ten years and we are now a Directly Licensed Centre. The scheme has a really positive impact on students and with its challenges and experiences is one of the most well-respected awards amongst further and higher education institutions and employers.



## Cadet Forces

Our students represent us proudly at a variety of local Cadet Forces. Becoming a cadet gives young people the chance to take part in exciting and challenging activities such as field craft, adventure training, first aid, music, sports and shooting, to name but a few. In addition to making new friends, cadets get the opportunity to go on annual camp and may even get to go on expeditions in the UK and sometimes abroad.



# Your future STARTS HERE



## Our Sixth Form

In September 2025, we are relaunched Wombourne Sixth Form as a stand-alone, school-based post-16 provision. Students in our Sixth Form are taught on our site and by our staff in all their subjects. All subjects requiring specialist teaching facilities will be taught in our £18-million new facilities which are currently being built next to the Sixth Form Centre. These facilities include state-of-the-art new Science labs, Art and DT workshops, a CAD design room, IT and Business suites, and much more.

Our course offer is updated every year in response to student demand, and will include many of the following subjects:

**English, Mathematics, Further Maths, Biology, Chemistry, Physics, Geography, History, Sociology, Psychology, Law, Criminology, Performing Arts, Art & Design, PE/Sport, Product Design, Health and Social Care, Business Studies, Digital Media and the Extended Project Qualification (EPQ).**

### Our students matter

All students at Wombourne Sixth Form have access to personalised study programmes, outstanding teaching in first-class facilities, small class sizes and bespoke individual support. Coupled with an active Students Union and leadership and mentoring opportunities, our students really are at the heart of what we do.

### Our achievements

With recent alumni at the universities of Cambridge, Birmingham and Loughborough, plus following apprenticeships with Severn Trent Water, National Highways Agency and West Midlands Police, no matter which exit route students want to take, our Sixth Form makes it possible.

### Our students succeed

Access to an academic tutor, a full enrichment offer, and a careers programme including work experience placements and visits to universities and apprenticeship providers ensure that students have the wider skills and knowledge they need to be successful.

### Our future

Students who leave our Sixth Form are our future. It is our mission to deliver a relevant and meaningful curriculum for every student which meets their needs, their aspirations, and those of the wider community.



**Wombourne**  
**High School**