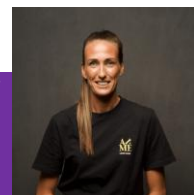




FRIDAY 5 DECEMBER 2025

# 'Ellow 'Ellow

## This week at Ellowes Hall



**THEME OF NEXT WEEK:** The Story of Christmas (Grace Foundation)  
**ELLOWES HALL OF FAME FOCUS:** Jill Scott MBE/ *Last Christmas* by Wham  
**CAREER OF THE WEEK:** Youth Worker



### Headteacher's Introduction

As we draw to the end of 2025, we are already starting to look ahead to what will be a landmark year for Ellowes Hall, which celebrates its 60<sup>th</sup> anniversary in March next year. To kick off a year of celebrations, we hosted our annual Awards' Evening last night – which is always, without doubt, my favourite event of our school year.

Whilst the performances are always a natural highlight, the reason Awards' Evening is so special for me is because of the extent to which it brings our whole community together – especially last night, when former students (now parents) delighted in finding themselves in school photos and pointing out to their own children some of the choices we strangely made back then in hairstyle and clothing!

That Ellowes approaches its 60<sup>th</sup> anniversary year with a thriving and committed community was very much evident last night. Although it is entirely conceived and ran by students, they turn to a considerable list of people who help them to execute their vision – from our Admin Teams who diligently prepare certificates, Art Department who help to decorate and the Performing Arts Team who help to collate and choreograph the performances. The whole event would also be impossible without the creativity and commitment of our Site Team and, crucially, by the many young people who volunteer to stay behind to help them in the moving and lifting!

This week has also seen the Year 11s begin their first GCSE mock week of this Academic Year. It will come as no surprise to you to hear that they have approached these with maturity, resilience and determination. We look forward to the success these will herald, as well as the opportunities they identify as next steps.

### WEEK B

#### Monday 8 December

**Year 11 Mock Exams:** RS; Physics

#### Tuesday 9 December

**Year 11 Mock Exams:** English Literature Paper 1; Travel & Tourism/Statistics Paper 2; Computer Science

#### Wednesday 10 December

**Year 11 Mock Exams:** History Paper 2A/2B; Geography Paper 1 & 3; BTEC Sport; Drama; Foreign Languages Writing Exam

#### Thursday 11 December

**Year 11 Mock Exams:** Art; Dance

16.00 – 18.30: Christmas Market

#### Friday 12 December

**Year 11 Mock Exams:** Design; Food & Nutrition; Music.

Christmas Jumper Day: Donations payable via ParentPay.

### 6,381 Positives This Week

**Year 7:** Nadia F & Matilda P  
**Year 8:** Charlie P  
**Year 9:** Freya H  
**Year 10:** Alfie C  
**Year 11:** Jay C

If your child is a Student of the Week but we have not included their picture, it means we do not have the necessary consent from you. Please contact us if you would like us to be able to use your child's picture!

## Tutor Groups with the Best Attendance This Week...

YEAR 7	7DH – Mr Hamilton	94.9%
YEAR 8	8EH – Ms Harvey	93.5%
YEAR 9	9SRI – Ms Rigby	93%
YEAR 10	10NKH – Ms Nightingale-Harris	98.2%
YEAR 11	11ASA – Ms Sabadas	98.3%



## This week's Sparx Superstars

	Sparx Reader	Sparx Maths	Sparx Science
7	Himmet K	Alyssia M	Sparx Science records scores slightly differently, but well done to all who completed this week's!
8	Dakshdeep K	Sebastian F	
9	Xaiver M	Chloe P	
10	Kenzie L	George A	
11	Quincy LR	Sam S	

Don't forget... students needing support with their Sparx, or simply a place to go to complete it, can attend Mrs P Jones' Bright Sparx Club every Tuesday After School at 4pm.



### Poem of the Week 26<sup>th</sup> November

The Land Where The Taffy Birds Grow (1932)

There's a lemondrop monkey that whistles and sings  
And marshmallow chickens with sugary wings.  
Eating wee gumdrop worms that the mother hen brings.  
In the Land Where the Taffy Birds Grow.

The rivers are gold-colored honey so sweet,  
And a licorice dog, you are certain to meet.  
With a lollipop pig that has caramel feet,  
In the Land Where the Taffy Birds Grow.

There's a chocolate mouse and a peppermint cat  
And a sugarplum cow in a coconut hat.  
Baking cinnamon cookies, so puffy and fat.  
In the Land Where the Taffy Birds Grow.

You'll see round doughnut stars playing peek-a-boo.  
And a big yellow moon smiling at you,  
(A gingerbread man told me these things were true)  
In the Land Where the Taffy Birds Grow.



## MOVEMBER

A number of our staff have been busy supporting Movember, raising awareness of the importance of promoting men's mental and physical health...



Our



for November is  
**Faith Crisp Year 7**



**Taffy**, a kind of candy made of molasses boiled down and poured out in shallow pans.

Do you feel hungry after reading the poem 'The Land Where The Taffy Birds Grow'? We've counted seventeen foods in the poem. Can you spot them all? Try to imagine this strange dream-like place where everything is edible. What might the fantastical animals, like a 'lemondrop monkey' and a 'peppermint cat', look like? When you recite this poem help your audience to see this weird and wonderful world: go slowly enough to let each image appear and give each one a unique flavour. Don't let the jaunty rhythm and rhyming triplets overtake the images!

If you want to be a Poetry by Heart **superstar** bring your poem to Miss Britten-Jeavons in E2. It can be a **topic of your choosing**, or **you can relate it to our tutor theme of the week**.









Congratulations to those students and staff who recently completed the **Bungello's Sponsored Walk for Birmingham Dogs Home**. The group completed the walk successfully on Friday, it was a challenge, but all showed great resilience! We have raised a huge £280 so far... If you would like to donate, please feel free to pop in and see us at the Christmas Fair!

Meanwhile, our Year 9 Student Leaders recently completed a fantastic Festive visit to one of our local partner care homes, running crafts and quizzes!







# Enrichment Activities – Autumn Term 2025 (Nov – Dec)

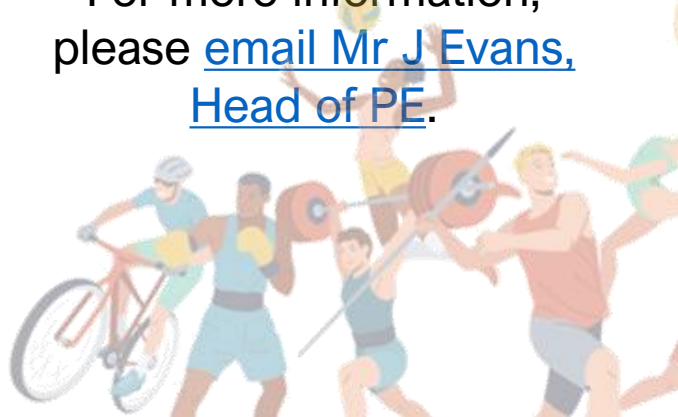


	Monday	Tuesday	Wednesday	Thursday	Friday
Before School	Breakfast in the Diner 8.00 – 8.40am				
11:15		Equality Ambassadors in E3 from 08:20 (BH)			
		Break Time Thrive Grace Foundation (ES)	Break Time Drop in Grace Foundation (ES)	Break Time Drop in Grace Foundation (ES)	
Lunch Time Clubs & Activities	The Library open to all every lunch time				
	Y7 Football in PE	Y11 Football in PE	Y10 Football in PE	Y8 Football in PE	Y9 Football in PE
	Choir in X1 (WJ)	Drama Scriptwriting Club in X4 (EH)	Drama Games Club in X4 (EH)	Beginners Guitar in X1 (WJ)	KS4 Dance Drop-in in X3 (RG) PE Kit Needed
	DT Club in D3 (DBA)	Christian Union / Drop in Grace Foundation (ES)	Drop in Grace Foundation (ES)	Equality Ambassadors & Space in E3 (BH)	Y7/8 Dance Club in X4 (EH) PE Kit Needed
	Textiles Club in D7 (TJ)	Digital Ambassadors in V3 (OM) KS3 programming club in V3 (DJ)	HAVE FUN	Nurture in SEND (MS/SW)	GET INVOLVED
	Enough - invite only (VR/MS) In Grace Foundation	Working Tuesdays (Careers and Health Ambassadors) in V6 (ATP/SR)		Drama Performance Club in X4 (EH)	
	KS4 Drama Rehearsal in X4 (EH)	Art Club in D5 (HHA)		Y7 Drop in Grace Foundation (ES)	
	Media Ambassadors in E8 (KRI)	Chess in S2 (DH)			
	Science Sparx HWK Club in V7 (DH)				
After School Clubs Activities	VOLUNTEER	Bright Sparx in V2 (PJ)	Lego Club 15:15 – 16:15 – Grace Foundation Rooms (VR)	Jujitsu 16.15 – 17:15 Sports Hall See Miss Harris due to a cost	Advanced Guitar Club 15:15 – 16:00 in X1
		Baking Club 15:15 – 16:15	Orchestra 15:15 – 16:00 in X1	Eco Ambassadors 15:15 – 16:15 in D4 (JMI)	KS4 Dance Drop-in in X3 (RG) PE Kit Needed
		Netball Y7 – 11 15:15 – 16:15 (JOP)	Basketball (Y7 – 10) 15:15 – 16:15 in Sports Hall	Badminton Y7 – 11 15:15 – 16:15 (RG)	
		Rugby Y7 – 11 15:15 – 16:15 (JEV)	Y9 Dance Club in X3 (RG)	Girls Football 7 – 11 15:15 – 16:15 (JW)	
		Musical Theatre Club in X4 (EH)		Parallel Club 15:15 – 15:45 in M10 (AR)	
		Film Club 15:15 – 16:15 – Grace Foundation Rooms (ES)			

## PE EXTRA-CURRICULAR TIMETABLE

<b>Monday</b>  <b>BTEC Sport Intervention V4 (Year 10 Only)</b> 3E / RG / LM / 3W	<b>Tuesday</b>  <b>Netball (7-11) 3P</b> <b>Rugby (7-11) 3E</b>
<b>Wednesday</b>  <b>Basketball (7-10)</b> <b>Black Country Basketball</b>	<b>Thursday</b> <b>Badminton (7-11) RG</b> <b>Girls Football (7-11) 3W</b> <b>BTEC Intervention (Year 11 Only)</b>
<b>Friday</b> <b>No Clubs!</b> 	<b>Notes</b> <b>Line up outside the Sports Hall</b> <b>Full PE Kit</b> <b>Fixtures take priority over training!</b>

Fancy trying a new sport? Why not be a part of one of our new partner clubs based here on school grounds. This opportunity isn't just for our students, put young people in the wider community also. For more information, please [email Mr J Evans, Head of PE.](#)



# Sparx

## Parent/Carer Guide

### How to log into Sparx to complete homework from home

Weekly homework will be set on the following days and then due on the same day the following week.

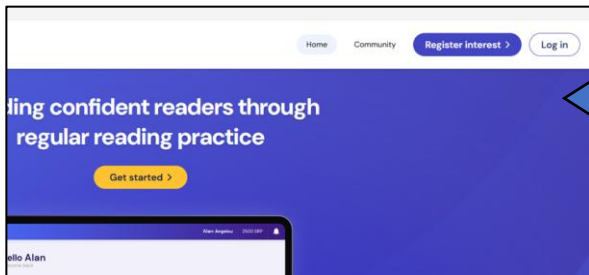
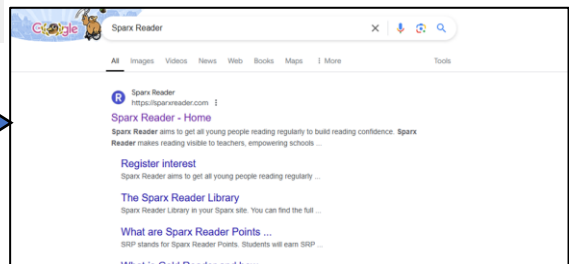
- Monday: Sparx Science
- Wednesday: Sparx Maths
- Thursday: Sparx Reader

Students can log into Sparx through either [the link on their Arbor page](#) or through a search engine such as Google.

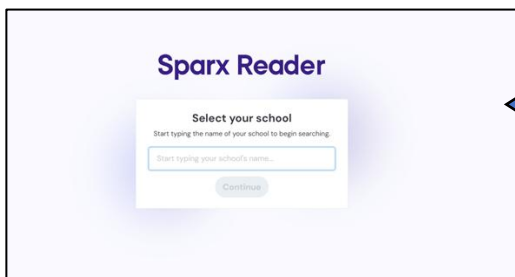


Subject	Homework set	Homework due in	Detention Night
Maths	Wednesday	Wednesday	Thursday
English	Thursday	Thursday	Friday
Science	Monday	Tuesday	Tuesday

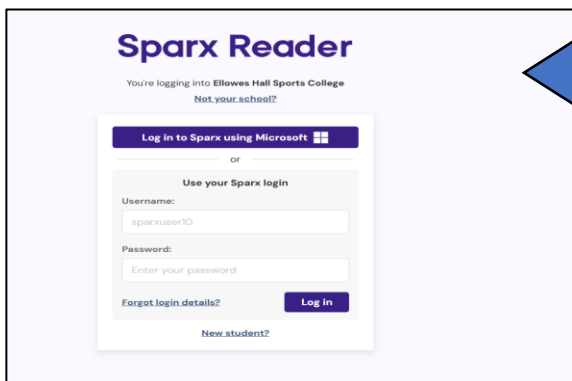
If accessing via Google, students will need to type Sparx Science/ Sparx Maths/ Sparx Reader into Google and select the first search result that appears.



Once they have clicked on either the link on Arbor or the search result on Google they need to click the white log in icon in the top right corner and then select student log in.



They will then be asked to select their school, which will appear as they start typing in Ellowes Hall Sports College



They can then click the purple box that says 'log in to Sparx using Microsoft' and then use their school email and password to log in. Their password is the same password that they use to log into any computer in school.

Any homework students have been set will appear. Students can continue to read on Sparx Reader even after their homework has been completed, and we would encourage them to, especially if they are really enjoying the book they have chosen.



## Carousel Homework for Geography and History

- One quiz per week per subject.
- Set and due Thursdays. Monday night detentions.
- Link set by Miss McCormack and Miss Perry to your email. Click this and login with your Microsoft email.
- You have to revise before you can take the quiz (say the answer to each flashcard aloud and then click 'show answer' to test yourself. Self-mark and then move on).
- Take the quiz and self-mark your answers. Be honest as your teacher can see!

### Y7 GEOGRAPHY WEEK 1

QUIZ BY MISS PERRY  
CLASS: YEAR 7 GEOGRAPHY

REVISE

TAKE QUIZ

Your teacher has locked the quiz.  
You must complete the flashcards  
before you can take this quiz.  
Click REVISE to get started.



9 COMING UP!

Define 'political geography'

SHOW ANSWER

I GOT THIS...

WRONG

NEARLY  
RIGHT

RIGHT

# HOMework

**ELLOWS HALL  
KEY STAGE 3**

## LOVE TO LEARN HOMEWORK BOOKLET

This booklet contains a range of tasks from each of your non-core subjects. You will need to use this as part of your homework. Please show your teacher on completion of a task for rewards.

Check in weeks 2025-2026  
Autumn term : w/c **8<sup>th</sup> December**  
Spring term: w/c **16<sup>th</sup> March**  
Summer term: w/c **22<sup>nd</sup> June**

**PE LOVE TO LEARN CHECK LIST**

Check in weeks 2025-2026

1. Complete a 20-minute workout	
2. Successfully complete 10 minutes of a circuit	
3. Complete a 5-minute bodyweight circuit	
4. Attend a PE lesson for one half-term	
5. Demonstrate a 10-minute circuit	
6. Attend a PE lesson for one half-term	
7. Complete a 10-minute circuit	
8. Attend a PE lesson for one half-term	
9. Complete a 10-minute circuit	
10. Attend a PE lesson for one half-term	

**REWARD CHALLENGE:**  
Watch a video on the importance of PE

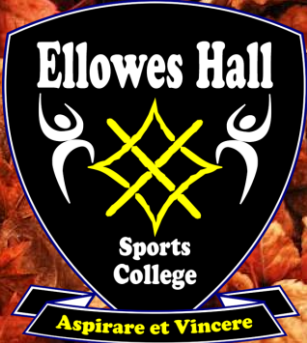
**DRAMA LOVE TO LEARN CHALLENGES**

Check in weeks 2025-2026

Create a Poster of the Physical Skills and their definitions	
Design a costume for a new action movie	
Attend a Drama Club for a half term	
Get involved in a Performing Arts showcase (afternoon or Saturday)	
Keep your own knowledge of Drama (afternoon or Saturday)	
Design a new set for your favourite TV show or film	
Design a new set for your favourite TV show or film	
Design a new set for your favourite TV show or film	

**REWARD CHALLENGE:**  
Watch a video on the importance of Drama

**KS3 Students (Years 7-9) have also been issued with Love to Learn Homework tasks. These will be checked at 3 checkpoints throughout the year, with effort scores shared with home. Prizes will be awarded for excellent participation!**



# Key Dates Autumn Term 2025

Date	Event
Thursday 18 September	15.30 – 17.00: Careers Convention, Wellbeing Café 17.00 – 17.30: Year 11 Parents' Information Evening
Friday 19 September	BTEC Sport Wolverhampton University Taster Day
Tuesday 23 September	Year 9 Walsall Art Gallery Trip
Wednesday 24 & Friday 26 September	Year 11 Geography Birmingham City Centre Fieldwork Trip
Thursday 25 September	13.30: Students dismissed for Open Evening preparation 16.00 – 19.00: <a href="#">Ellowes Hall Open Evening for Year 7 September 2026 Entry</a>
Friday 26 September	Macmillan Community Coffee Morning
Monday 29 September – Thurs 2 October	09.15 – 10.00: <a href="#">Open Mornings for Year 7 September 2026 Entry</a>
Monday 29 September – Thurs 2 October	KS4 Cornwall Art Trip
Tuesday 7 October – Friday 10 October	KS4 Poland Trip
Thursday 9 October	15.30 – 16.30: Year 7 Parents/Carers Form Tutor Drop-In Sessions
Thursday 16 October	Performing Arts Department Open Mic Night
Tuesday 21 October	Year 7 X Band Birmingham Think Tank Trip
Thursday 23 October	Year 7 Y Band Birmingham Think Tank Trip Halloween Disco
Friday 24 October	Flu Vaccinations (Year 11 & Catch-Ups)
Monday 27 – Friday 31 October	October Half Term
Monday 3 November	08.45: Student Return to School
Friday 7 November	Flu Vaccinations (Catch-Ups)
Wednesday 12 November	INSET Day (School Closed to All Students)
Wednesday 19 – Friday 21 November	Year 7 Whitemoor Lakes Trip
Thursday 27 November	15.30 – 18.30: Year 7 Parents' & Carers' Evening
Monday 1 – Friday 12 December	Year 11 Mock Exams
Thursday 4 December	Awards' Evening
Monday 8 December	KS3 Love to Learn Homework Check-In 1
Thursday 11 December	Birmingham Royal Ballet <i>Nutcracker</i> Trip
Thursday 11 December	Christmas Market
Friday 12 December	Christmas Jumper Day
Tuesday 16 December	Year 7 Christmas Carol Service
Wednesday 17 December	Community Christmas Lunch
Thursday 18 December	Performing Arts Department Christmas Concert
Friday 19 December	12.00PM: School Closes for Christmas Holiday



**Ellowes Hall Christmas Market**  
**Thursday 11th December 16:00—18:30hrs**  
**40+ Stalls & Santa's Grotto, Food, Drinks and Music.**







# BLACK COUNTRY CLUB

Thanks to our partnership with Black Country Basketball Club, we are thrilled to share their generous gift of free Family Season Tickets for our students. Please use the QR Code below to access more information...



## FREE FAMILY SEASON TICKETS FOR ELLOWES STUDENTS

BLACK COUNTRY BASKETBALL CLUB



DISCOUNT CODE: ELLOWESFAMILY



# WHAT'S ON GUIDE

## WINTER 2025



**Click the image above to find information about Dudley Borough Council's programme of Christmas activities and meals during the school holidays...**

## INTRODUCTION



HAF activities are running from **20<sup>th</sup> December 2025 to 3<sup>rd</sup> January 2026**

There is a huge range of fun activities and family events on offer, so take a look through this brochure to see what we have in store! Please also read the information below carefully for information on eligibility and the booking process.

### What is HAF?

Dudley Holiday Activities and Food (HAF) Programme is a government-funded programme offering free activities and meals during the school holidays, primarily for school-aged children from Reception to Year 11 (inclusive) who receive benefits related Free School Meals.

### The Booking Process

- Bookings open on **Monday 24<sup>th</sup> November 2025**
- You must be registered on the Dudley HAF website to be able to book activities. If you haven't already registered, please sign up on the [Dudley HAF Website](#).
- Once FSM status has been verified, you will receive an email with login details and a password for your account.
- If you are already registered, you do NOT need to register again - just log in to your account
- When bookings open, you can log in and book sessions for your children.
- For the winter holidays, each eligible child can book up to **4 fully funded places**.